

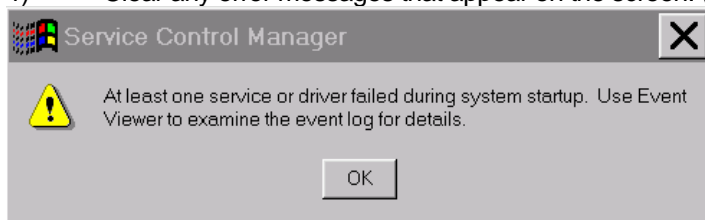
**Hard Drive Replacement Procedure:**

- 1) Turn System Power OFF
- 2) Remove the two (2) screws holding the old Hard Drive Assembly in place and slide it out using the handle
- 3) Slide the new Hard Drive Assembly into place. Make sure that it is pushed in all the way and install the two (2) screws
- 4) Turn System Power back ON

**Software Load Procedure:**

CAMI Hard Drives are automatically loaded with Dual System software. If it is a Dual System, skip ahead to "Commissioning Procedure".

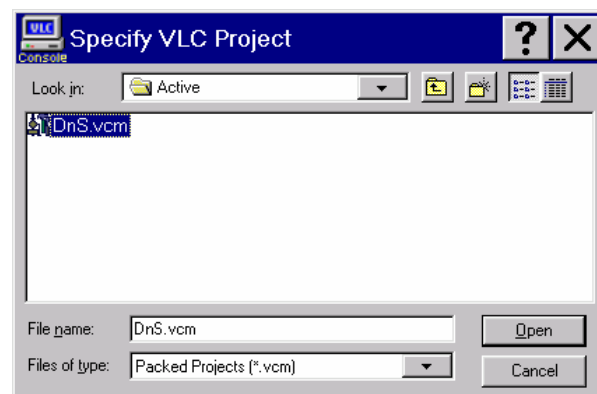
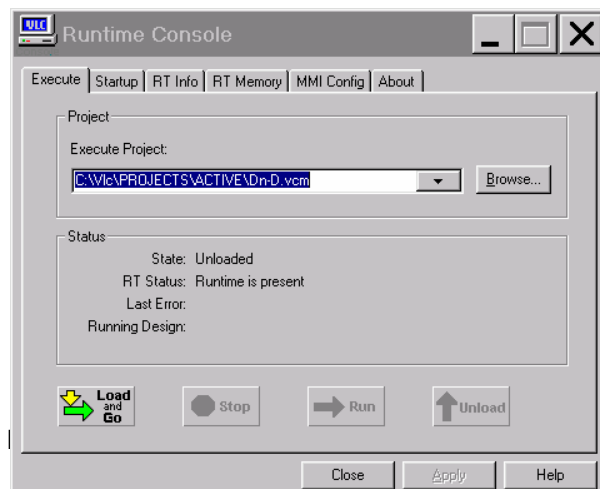
- 1) Clear any error messages that appear on the screen. (see example)



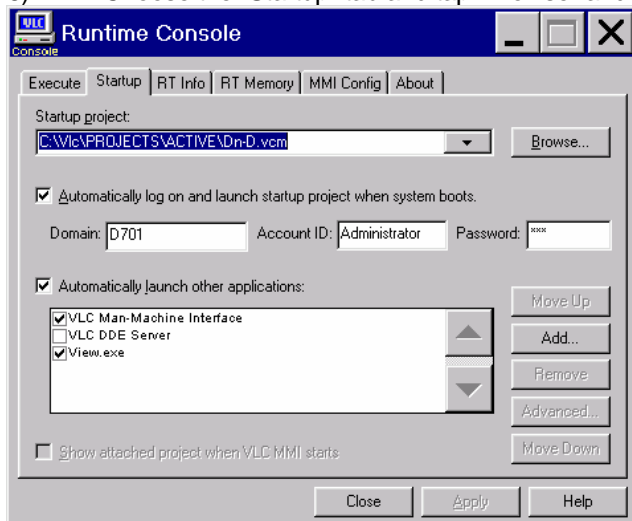
- 2) Close all running programs. Use Alt-F4 on a keyboard to close the MMI viewer.
- 3) Tap twice on "Single System" to set up a Single or tap twice on "Dual System" to go from a Single to a Dual.



- 4) Tap "Yes" and "OK" for all of the questions and the "Runtime Console" will appear.
- 5) In the "Execute" tab, tap "Browse" and highlight the program in the "Active" directory



- 6) Choose the "Startup" tab and tap "Browse" and highlight the program in the "Active" directory



- 7) Tap "Apply"
- 8) Close all programs and restart the system

### Commissioning Procedure:

When the system is starting, the logo screen will display and it says "Please wait...".

Press the "COMMISSION" button on the lower right of this screen. This only needs to be done once each time the system type is changed.

**For a single 1K (Shotmeter Dispenser):**

The image shows a screenshot of a commissioning configuration screen with a light blue background. It is divided into two main sections: 'SYSTEM ONE CONFIGURATION' and 'SYSTEM TWO CONFIGURATION'. Each section has a list of components with radio buttons next to them. In 'SYSTEM ONE', '1K ONE PART DISPENSER' (Node 1) and 'CONSOLE Pre' (Node 20) are selected. In 'SYSTEM TWO', 'NONE - SYSTEM TWO NOT INSTALLED' is selected. Below these sections is a question: 'IS ROBOT USING "ROBOT\_IN\_CYCLE" OUTPUT TO DISPENSE WET OR ABORT DISPENSE ?' with 'YES' and 'NO' radio buttons. A 'DONE' button is in the bottom right corner.

SYSTEM ONE CONFIGURATION		SYSTEM TWO CONFIGURATION	
<input checked="" type="radio"/> 1K ONE PART DISPENSER	NODE 1	<input type="radio"/> 1K ONE PART DISPENSER	NODE 11
<input type="radio"/> 2K TWO PART DISPENSER	NODE 7	<input type="radio"/> 2K TWO PART DISPENSER	NODE 17
<input type="radio"/> 1R REGULATOR DISPENSER	NODE 8	<input type="radio"/> 1R REGULATOR DISPENSER	NODE 18
		<input checked="" type="radio"/> NONE - SYSTEM TWO NOT INSTALLED	
<input type="radio"/> CONSOLE Stc	NODE 2	<input type="radio"/> CONSOLE Stc	NODE 12
<input checked="" type="radio"/> CONSOLE Pre	NODE 20	<input type="radio"/> CONSOLE Pre	NODE 30
FIRST PUMP OR MAJOR	NODE 3	FIRST PUMP OR MAJOR	NODE 13
MINOR PUMP	NODE 4	MINOR PUMP	NODE 14
REMOTE SWITCH	NODE 5	REMOTE SWITCH	NODE 15
EXTRA GUN BOX	NODE 6	EXTRA GUN BOX	NODE 16

IS ROBOT USING "ROBOT\_IN\_CYCLE" OUTPUT TO DISPENSE WET OR ABORT DISPENSE ?

☐ YES    ☒ NO

DONE

For a Dual 1K1R (Shotmeter in System 1, Regulator/ Flowmeter in System 2):

SYSTEM ONE CONFIGURATION	SYSTEM TWO CONFIGURATION
<input checked="" type="radio"/> 1K ONE PART DISPENSER    NODE 1	<input type="radio"/> 1K ONE PART DISPENSER    NODE 11
<input type="radio"/> 2K TWO PART DISPENSER    NODE 7	<input type="radio"/> 2K TWO PART DISPENSER    NODE 17
<input type="radio"/> 1R REGULATOR DISPENSER    NODE 8	<input checked="" type="radio"/> 1R REGULATOR DISPENSER    NODE 18
	<input type="radio"/> NONE - SYSTEM TWO NOT INSTALLED
<input type="radio"/> CONSOLE Stc NODE 2	<input type="radio"/> CONSOLE Stc NODE 12
<input type="radio"/> CONSOLE Pre NODE 20	<input checked="" type="radio"/> CONSOLE Pre NODE 30
FIRST PUMP OR MAJOR    NODE 3	FIRST PUMP OR MAJOR    NODE 13
MINOR PUMP    NODE 4	MINOR PUMP    NODE 14
REMOTE SWITCH    NODE 5	REMOTE SWITCH    NODE 15
EXTRA GUN BOX    NODE 6	EXTRA GUN BOX    NODE 16
IS ROBOT USING "ROBOT_IN_CYCLE" OUTPUT TO DISPENSE WET OR ABORT DISPENSE ?	
<input type="radio"/> YES <input checked="" type="radio"/> NO	
	<div>DONE</div>

For a Dual 1K1K (Two Shotmeters):

SYSTEM ONE CONFIGURATION	SYSTEM TWO CONFIGURATION
<input checked="" type="radio"/> 1K ONE PART DISPENSER    NODE 1	<input checked="" type="radio"/> 1K ONE PART DISPENSER    NODE 11
<input type="radio"/> 2K TWO PART DISPENSER    NODE 7	<input type="radio"/> 2K TWO PART DISPENSER    NODE 17
<input type="radio"/> 1R REGULATOR DISPENSER    NODE 8	<input type="radio"/> 1R REGULATOR DISPENSER    NODE 18
	<input type="radio"/> NONE - SYSTEM TWO NOT INSTALLED
<input type="radio"/> CONSOLE Stc NODE 2	<input type="radio"/> CONSOLE Stc NODE 12
<input type="radio"/> CONSOLE Pre NODE 20	<input checked="" type="radio"/> CONSOLE Pre NODE 30
FIRST PUMP OR MAJOR    NODE 3	FIRST PUMP OR MAJOR    NODE 13
MINOR PUMP    NODE 4	MINOR PUMP    NODE 14
REMOTE SWITCH    NODE 5	REMOTE SWITCH    NODE 15
EXTRA GUN BOX    NODE 6	EXTRA GUN BOX    NODE 16
IS ROBOT USING "ROBOT_IN_CYCLE" OUTPUT TO DISPENSE WET OR ABORT DISPENSE ?	
<input type="radio"/> YES <input checked="" type="radio"/> NO	
	<div>DONE</div>